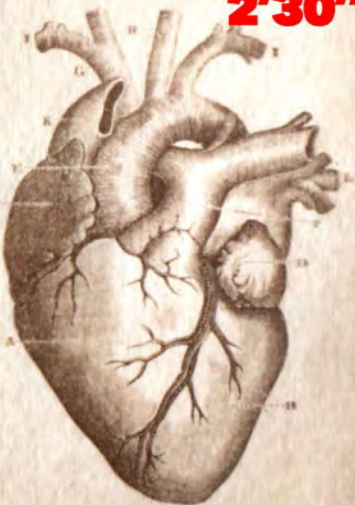


FIG. 11.

2'30"



The heart. A, the right ventricle; B, the left ventricle; C, the right auricle; D, the left auricle.

FIG. 12.

5'



The heart. A, the right ventricle; B, the left ventricle; C, the right auricle; D, the left auricle.

FIG. 13.

7'30"



The heart. A, the right ventricle; B, the left ventricle; C, the right auricle; D, the left auricle.

FIG. 14.

10'



The heart. A, the right ventricle; B, the left ventricle; C, the right auricle; D, the left auricle.

